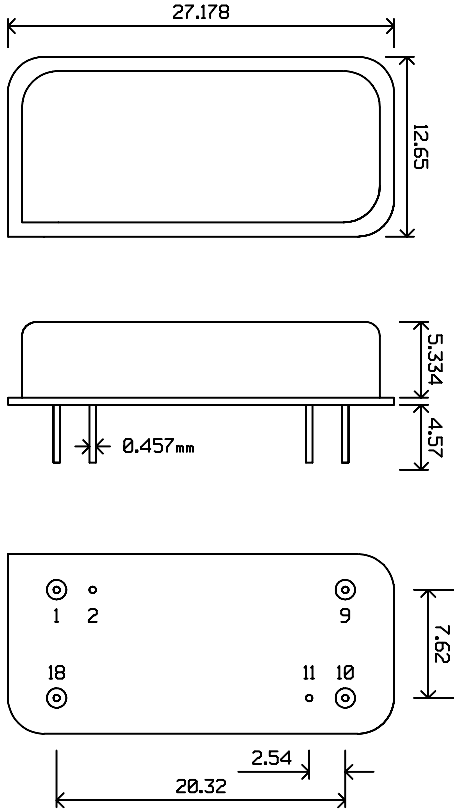


PACKAGE OUTLINE

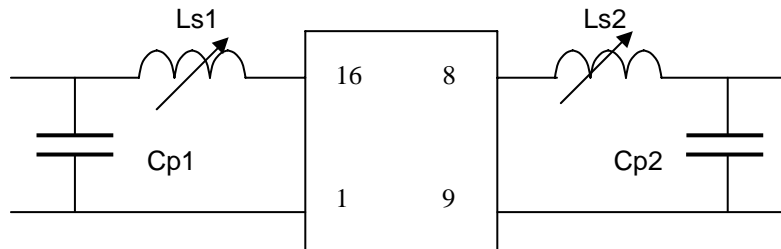


Units: mm

Pin Configuration:

Input: 18
Input Return: 1
Output: 9
Output Return: 10
Ground: 2, 11

MATCHING CIRCUIT



Typical component values: Ls1 = 0.7 - 1.41 μ H Ls2 = 0.7 - 1.41 μ H
Cp1 = 56 pF Cp2 = 47 pF

Notes:

1. Variable inductors are adjusted for minimum insertion loss
2. Recommended Inductors are Coilcraft SLOT-10-3-01 and SLOT-10-3-02